

ASPEN A-52

Bridge Inspection Unit

Inspection and Maintenance

Design.....The Aspen A-52 was designed as a dual functioning machine, one that can be used for both inspection and maintenance tasks. With the articulating boom installed, inspectors have the flexibility to inspect all areas of the bridge; above, below and 53' horizontally under. An interchangeable 1,500 capacity work platform can be installed for those heavy duty tasks, when you need additional room and extra tools to complete your work.

Accessories..... The Aspen A-52 can be equipped to assist you in your job. Air, 110 or 220V power, water lines, hydraulic tool circuit or welding cables can be routed to the platform for your use. The job can be finished in less time because the tools are there for you.

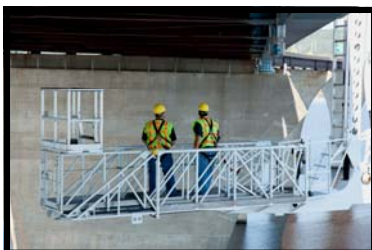
Stabilization.....Outriggers are not required and all counterweights stay within the width of the truck body. A sliding counterweight is installed and operates to either side while the Aspen A-52 is deployed to the opposite side.



Interchangeable Platforms



Two platform options are available. Either a telescoping boom with an articulating 4th boom and inspection platform, or a 1,500 lb 3-stage walkway can be installed.



Advanced Control System



As the most advanced microprocessor control system available, the "Plus 1" Graphical Terminal Interface includes a color display depicting unit operation and individual function performance while monitoring the unit's parameters, hydraulics and enabling simple troubleshooting. Wireless controls are included at both operator stations. A communication system is also provided with speakers in the cab, at the turntable, and in the platform. The platform station operates in the "hands-free" mode.

Easy Deployment through cables and trusses



Whether you have the telescoping boom or walkway installed, the Aspen A-52 can easily maneuver around cables and steel truss members.





Standard Equipment

- Plus 1 Graphic Terminal Interface
- Hydraulically adjustable turntable
- Automatic leveling platform: 40" x 60" (1016mm x 1524mm), 600lb. (272kg.) capacity w/access gate
- 2 sets of wireless controls: one set in the platform and one set at the pedestal
- 4 articulating booms (3rd boom telescope); 2 rotating turrets
- Stability interlocks with monitoring system
- Two power systems: power take-off from the truck's transmission and a back-up diesel power unit
- 12-volt intercom system between platform, driver's compartment and pedestal

Options include air, electric and water lines

Horizontal Underbridge Reach	53' / 16.1m
Vertical Reach Down	57'-6" / 17.6m
Vertical Reach Up	44' / 13.4m
Boom no. 1 movement	+30 to - 35
Boom no. 2 movement	+ 0 to -105
Boom no. 3 movement	+90 to - 60
Boom no. 4 movement	+90 to - 34
Space Required on Bridge	102" / 2.5m
Basket Capacity	600 lbs. / 272 kg.
Basket Size	40" x 60" x 42" 101cm x 152cm
Overall Length	39' / 11.9m *
Overall Height	12'-10" / 3.9m *

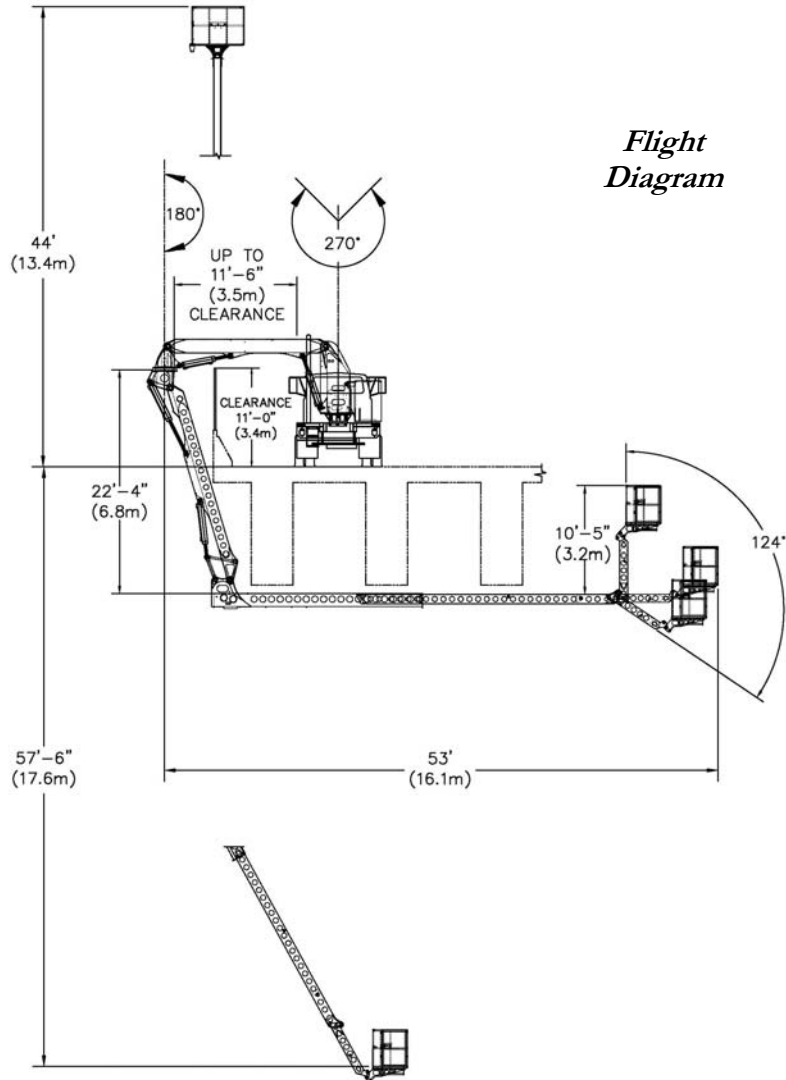
* May vary depending on chassis

Aspen Aerials, Inc.
4303 West 1st Street
Duluth, MN 55807

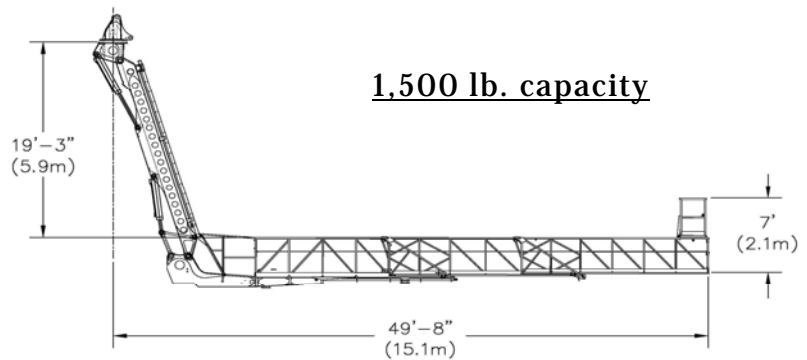
Phone: 218-624-1111
Toll Free: 800-888-2773
Fax: 218-624-1714
Web site: www.aspenaerials.com



Specifications



Platform Features



The Aspen A-52 can be equipped with an interchangeable work platform. This 43' long steel walkway can extend close to 50' horizontally under the bridge. It is kept level by means of a hydraulic leveling system and comes equipped with a "step up" platform for access behind deep girders. Wireless controls enable the workers to move the unit from anywhere along the platform.